

Serving the owners and operators of automated machinery with world class sensor products and downtime reduction services to apply them.



Colored LED Touch Buttons



Multi-Colored LED Dome Lights



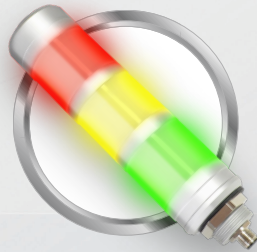
Signal Column Lights



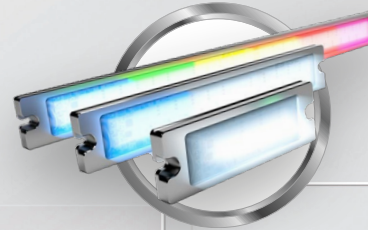
Signal Tower Lights



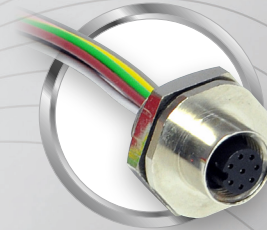
IO-Link LED Dome Lights



IO-Link LED Stack Lights



IO-Link LED Machine Lights



Panel Mounts



Linear LED Machine Lights



Field Connectors - 4, 5, 8-pin



Sensor Cables - 4, 5, 8-pin



Lighting Accessories

The World's Best Proximity Sensor Lineup

TRIPLE RANGE METALHEAD™

The best choice for the detection of ferrous and non-ferrous targets at long sensing distances.



FOOD GRADE METALHEAD™

The best choice for food and packaging machinery where a completely sealed sensor is required for long-lasting operation in a tough environment.



LONG RANGE

The best choice for machinery where a longer range is required and where contact needs to be avoided from parts or tooling.



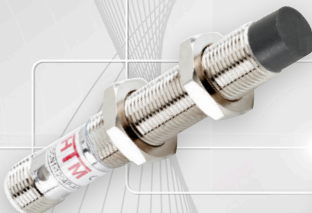
EXTENDED RANGE

The best value in the sensor line up with great performance features, extended range, more durability and a low price for all applications.



UNSHIELDED STANDARD

The ideal choice for simple applications that need a little more sensing range with a low price.



STANDARD RANGE

The best price of all the major brands for general applications that require a reliable and low-cost sensor.



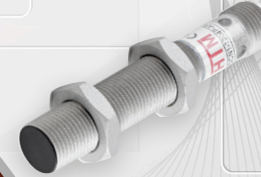
CAPACITIVE

The best choice for the reliable detection of liquids, bulk solids, plastics, powders, pellets and pastes. M8 to M32 sizes, AC or DC, Shielded or Unshielded.



AUTOMOTIVE GENERAL PURPOSE

The best choice for tooling and assembly fixtures, spot welding machines and mig welding cells where a reliable, cost-effective sensor is required for sensing applications.



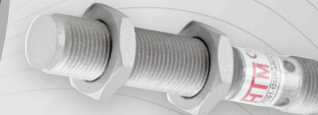
WELD FIELD IMMUNE

The best choice for mig and spot welding machinery for reliable operation around high heat, weld spatter and high magnetic fields.



SPATTERGUARD™

The standard for harsh applications with a metal face, 4 mm range, PTFE coating, and 100 °C rating.



SPATTERGUARD™ WFI-120

A premium sensor for heavy duty machinery, with a thick one-piece housing, 120 °C rating, and Weld Field Immune electronics.



AUTOMATED WELDING

The best choice for weld spatter resistance and the detection of ferrous and non-ferrous targets at long sensing distances. This IP69K lineup is extra durable, and comes standard with the ability to integrate with IO-Link devices for process optimization.



**Longer Ranges, Durable Housings, Advanced Coatings.
The Right Sensor for your Applications.**