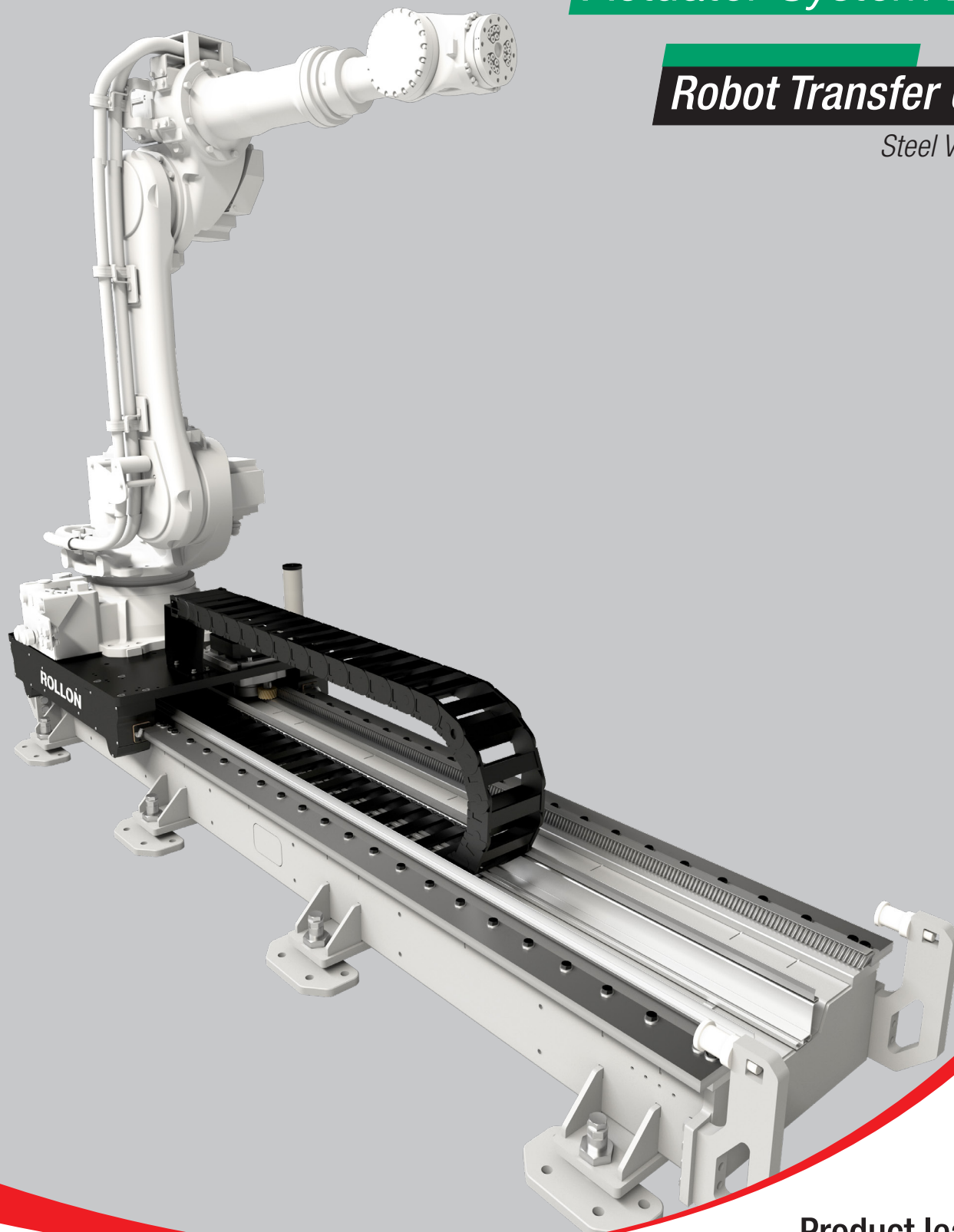


ROLLON®
BY TIMKEN

Actuator System Line

Robot Transfer Unit

Steel Version



Product leaflet
English

Interactive catalogs
on: www.rollon.com



Robot Transfer Unit

Robots continue to move beyond traditional manufacturing into handling technologies, logistics and packaging areas, cutting machines, laboratories, workshops, and small production environments.

New sectors of the economy, including small and medium size enterprises are embracing automation and new customer segments (including healthcare, fast moving consumer goods, retail, constructions) are accelerating. Our systems for handling robots or heavy loads increase efficiency, capacity and coverage and enables continuous operations.

Shuttle system for moving robots and heavy loads for long distances with high dynamics. **8 main advantages:**



1

Easy to integrate with any type of robot

Rack and pinion driven Robot Transfer Unit guarantees simple integration for any type of robot.



2

High stiffness

Steel profile and robust design for industrial use with high stiffness and low weight.



3

Simplified mounting and alignment

Due to adjustable levelling systems integrated into the rigid, factory-aligned cross-members.



4

Potentially infinite strokes

Rack and pinion driven sizes can reach potentially infinite strokes thanks to jointable, self-centring inserts.

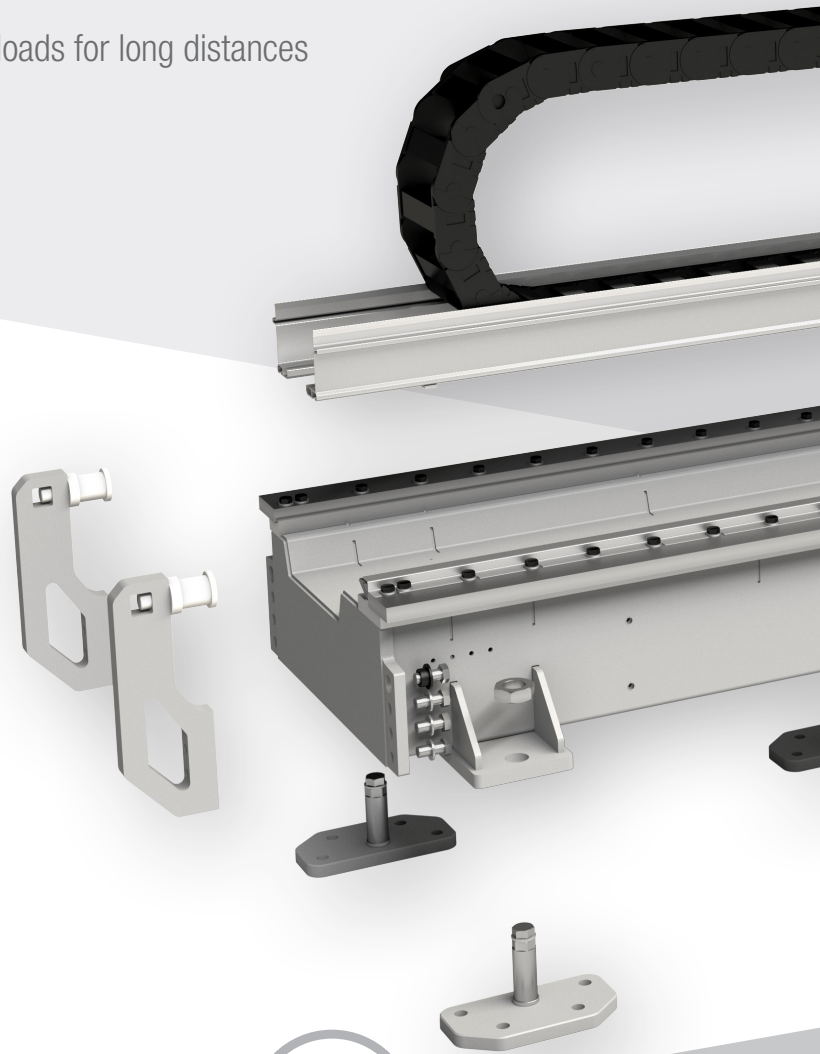


5

For every work environment

Different versions are available to make Robot Transfer Unit reliable in many applications and environments:

- ROLLER GUIDE SYSTEM ideal in all working environments due to roller guide system with lifetime lubricated and tapered rollers for high contamination environments.
- RE-CIRCULATING GUIDE SYSTEM for high loads and high repeatability.





6

High quality

Rigid structure for high loads with high moments of inertia and integrated planetary gearbox. Modular and rack and pinion system with helical teeth for silent movement and high dynamics.



7

Full range of accessories

Ready to use solution supplied with standard cable carrier, gearbox and lubrication systems.

Customized solution and additional carriage. Other optionals available for the most demanding applications.



8

High reliability

High positioning precision and stability. Proven technology based on years of experience in linear systems. Global presence in the key markets with local expertise.

Robot Transfer Unit

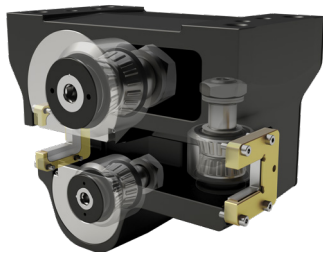
We support our customers in their efforts towards more investments in automation offering systems to increase productivity and efficiency. To meet their requirements we produce our systems with a tailormade approach.

ADVANTAGES OF OUR SYSTEMS

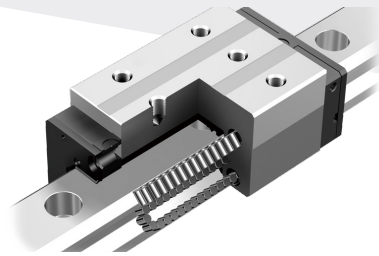
- PRODUCTIVITY
- VERSATILITY
- EASY INSTALLATION
- HIGH RELIABILITY
- EASY MAINTENANCE
- MODULARITY

GUIDING SYSTEMS

RTU is available with two different guidance systems: **Roller guides** or **Re-Circulating roller guides**.



Roller guide for harsh environment and reduced maintenance

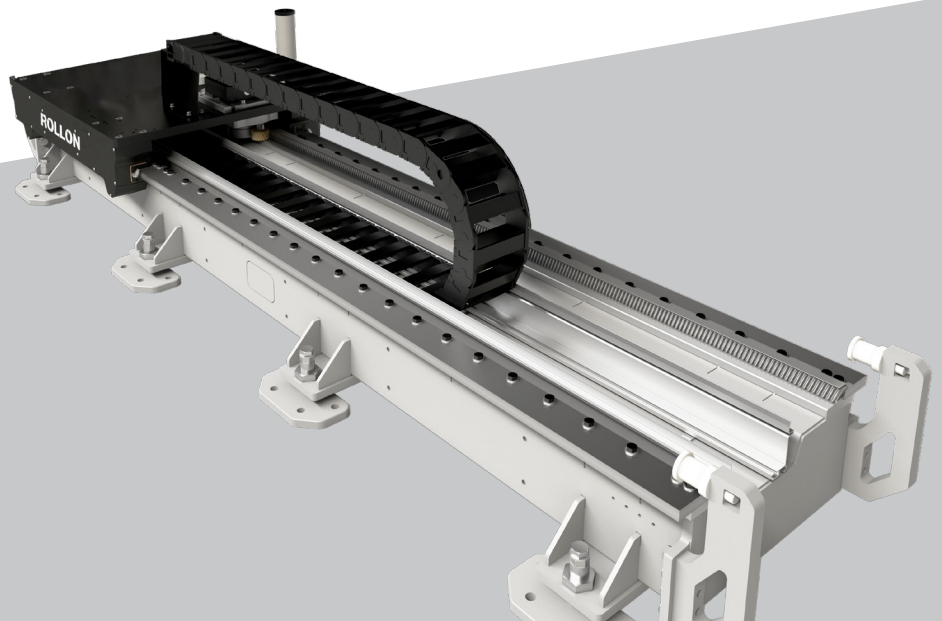


Re-circulating roller guide for high stiffness and precision

APPLICATION FIELDS

- ASSEMBLING AND HANDLING
- LOGISTIC & AUTOMATION
- LOAD AND UNLOAD
- WELDING
- PACKAGING
- AUTOMOTIVE

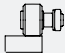



**DIFFERENT SIZES,
A WIDE RANGE
OF OPTIONS
EASY TO INTEGRATE
INTO YOUR SYSTEM.**



ROBOT EXAMPLES ACCORDING TO DIFFERENT SIZES

Robot examples mentioned are indicative and refer to floor mounted version. For a correct choice and sizing of the axis please contact our technical department.

RTU		Robot examples		
Series	Brand	Model	Payload [Kg]	Weight [Kg]
RTUn 020	ABB	IRB 1660ID-6/1.55 ; IRB 1600ID; IRB 1600-10/1.45; RB 1600-6/1.2; IRB 1600-6/1.45; IRB 1600-8/1.2; IRB 1600-8/1.45	4-10	250-257
		IRB 2400-10; IRB 2400-16; IRB 2400L	7-10	380
		IRB 2600-12/1.65 IRB 2600-12/1.85 ; RB 2600-20/1.65; IRB 2600ID-15/1.85; IRB 2600ID-8/2.00	8-20	272-284
		IRB 4600-20/2.50; IRB 4600-40/2.55; IRB 4600-40/2.55; IRB 4600-45/2.05; IRB 4600-60/2.05	20-60	412-435
	CMA	IRB 52/1.2; IRB 52/1.45; IRB 580-12 short arm; IRB 580-12S short arm	7	250
		GR680	12	630
	COMAU	Smart NS 12-1.85 ARC; Smart NS 12-1.85 HAND;	12	335
		Smart NS 16-1.65 ARC; Smart NS 16-1.65 HAND	16	335
	FANUC	Smart5 ARC4	5	375
		ARC Mate 120iC/12L; ARC Mate 120ID/12L	12	250
		M-710iC/12L; ; M-710iC/20L; M-710iC/45M; M-710iC/50; M-710iC/50E; M-710iC/50S; M-710iC/70; M-710iC/20M	12	250
		M-20iA/12L; M-20iD/12L	12-70	530-570
	KAWASAKI	CR-35iB	35	375
		RD80N	30	540
KUKA	RS030N; RS050N; RS080N	30-80	555	
	Cybertech KR 8 R2010; Cybertech KR12 R1810-2; Cybertech KR16 R1610-2; Cybertech KR16 R2010-2; Cybertech KR20 R1810-2; Cybertech KR22 R1610-2	8-22	255-260	
YASKAWA	Iontec KR 30 R2100; Iontec KR 50 R2100; Iontec KR 50 R2500; Iontec KR 70 R2100	30-50	533-559	
	GP110; GP25-12; GP35L; GP50; GP88; GP25	12-88	250-630	
NACHI	MC35-01; MC50-01; MC70-01	35-70	640	
STAUBLI	TX140; TX160; TX160L	25-40	250-265	
RTUn 020s	ABB	IRB 1660ID-6/1.55; IRB 1600ID; IRB 1600-10/1.45; IRB 1600-6/1.2; IRB 1600-6/1.45; IRB 1600-8/1.2; IRB 1600-8/1.45	4-10	250-257
		IRB 2400-10; IRB 2400-16; IRB 2400L	7-10	380
		IRB 2600-12/1.65; IRB 2600-12/1.85; IRB 2600-20/1.65; IRB 2600ID-15/1.85; IRB 2600ID-8/2.00	8-20	272-284
		IRB 4600-20/2.50; IRB 4600-40/2.55; IRB 4600-40/2.55; IRB 4600-45/2.05; IRB 4600-60/2.05	20-60	412-435
	CMA	IRB 52/1.2; IRB 52/1.45; IRB 580-12 short arm; IRB 580-12S short arm	7	250
		GR680	12	630
	COMAU	Smart NS 12-1.85 ARC; Smart NS 12-1.85 HAND; Smart NS 16-1.65 ARC; Smart NS 16-1.65 HAND	12	335
		Smart NS 16-1.65 ARC; Smart NS 16-1.65 HAND	5	375
	FANUC	Smart 5 ARC4	12	250
		ARC Mate 120iC/12L; ARC Mate 120ID/12L	12	250
		M-710iC/12L; M-20iA/12L; M-710iC/20L; M-710iC/45M; M-710iC/50; M-710iC/50E; M-710iC/50S; M-710iC/70; M-20iD/12L; M-710iC/20M	12-70	530-570
		CR-35iB	35	375
	KAWASAKI	RD80N	30	540
		RS030N; RS050N; RS080N	30-80	555
KUKA	Cybertech KR 8 R2010; Cybertech KR12 R1810-2; Cybertech KR16 R1610-2; Cybertech KR16 R2010-2; Cybertech KR20 R1810-2; Cybertech KR22 R1610-2	8-22	255-260	
	Iontec KR 30 R2100; Iontec KR 50 R2100; Iontec KR 50 R2500; Iontec KR 70 R2100	30-50	533-559	
YASKAWA	GP110; GP25-12; GP35L; GP50; GP88; GP25	12-88	250-630	
NACHI	MC35-01; MC50-01; MC70-01	35-70	640	
STAUBLI	TX140; TX160; TX160L	25-40	250-265	

Reference		Linear guides		Drive	Frame	Number of profiles	Maximum speed [m/s]	Maximum acceleration [m/s ²]	Repeatability [mm]	Payload with robot [kg]
Family	Product	Re-circulating Rollers	Rollers	Rack						
Robot Transfer Unit	RTUn 020p				Steel	1	up to 2.5	Up to 4	± 0.025	1000
	RTUn 020s				Steel	1	up to 2.5	Up to 4	± 0.025	750

TO SUPPORT YOU, WE DESIGN AND PRODUCE

Our goal is to support you become **more competitive in your markets**, through technological solutions, design simplification, productivity, reliability, duration, and low maintenance.

We offer everything from **individual components to specifically designed**, mechanically integrated systems: the quality of our applications is an expression of our technology and competence.

ROLLONLAB: EXPERIMENTATION AND INNOVATION

RollonLab, a specialized laboratory where new products created by the R&D department are tested and optimized to perform beyond their technical limits through performance tests and strict quality controls.

RollonLab also tests products in simulations of different application scenarios, to guarantee that the client receives **highly competitive custom products**.

SUPPORT & CUSTOMIZATION

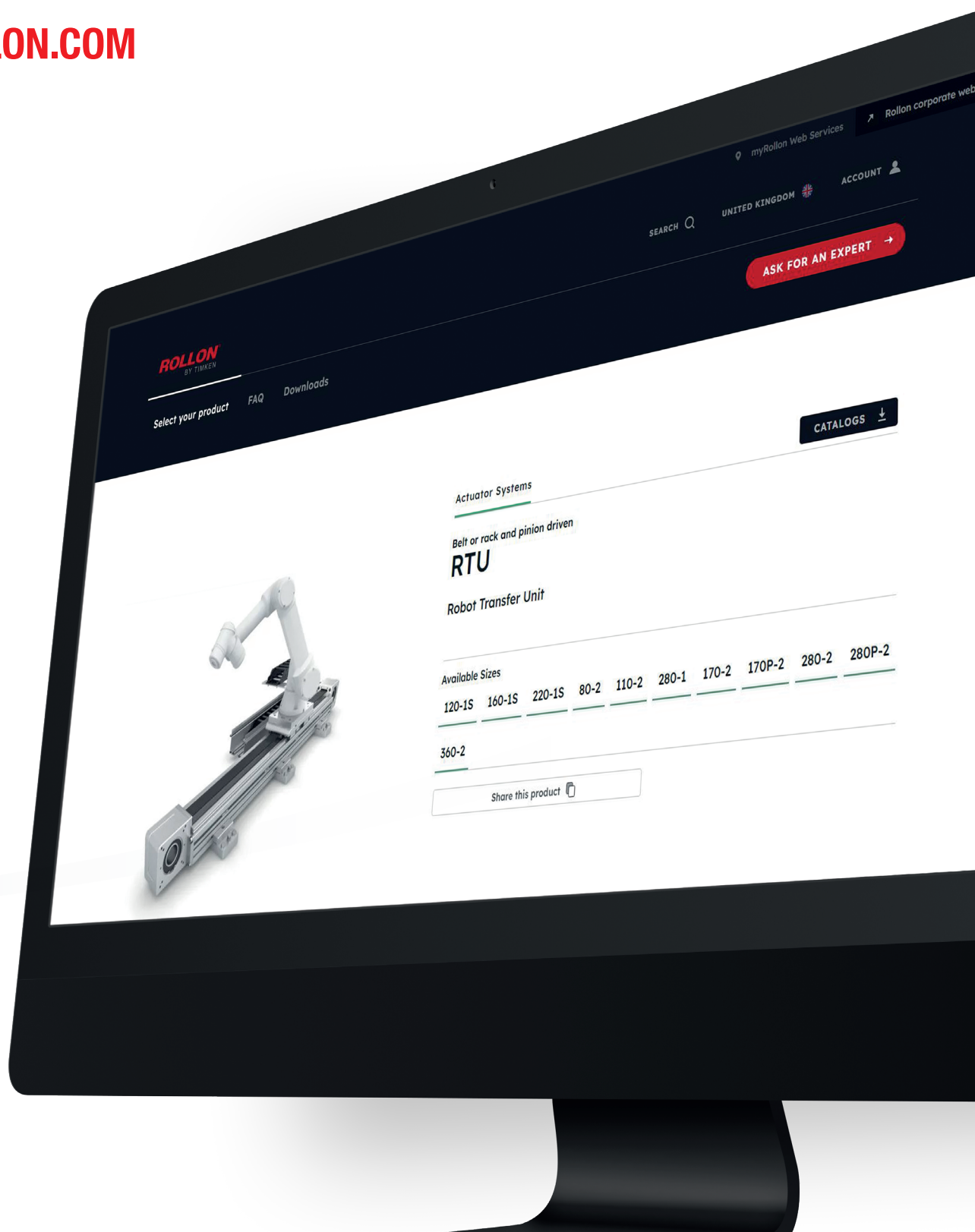
- Product training
- Custom product prototyping
- Application sizing and engineering
- 2D / 3D product drawings on demand
- On-site support for first installation and mock-ups
- Co-design service on sub-systems and full assemblies
- Internal laboratory for static abuse load and endurance tests

Thanks to the experience acquired through years of applications and research, we are able to provide high quality products specifically designed for your needs.



A NEW **DIGITAL EXPERIENCE**
SURROUNDED BY **ROLLON EXPERTS**
WHERE YOU CAN EASILY SELECT
THE PRODUCT **YOU NEED.**

MY.ROLLON.COM





Follow us:



● Rollon Branches & Rep. Offices
● Distributors

EUROPE

ROLLON S.p.A. - ITALY

Via Trieste 26
I-20871 Vimercate (MB)
Phone: (+39) 039 62 59 1
www.rollon.com - infocom@rollon.com

ROLLON GmbH - GERMANY

Bonner Strasse 317-319
D-40589 Düsseldorf
Phone: (+49) 211 95 747 0
www.rollon.de - info@rollon.de

ROLLON S.A.R.L. - FRANCE

Les Jardins d'Eole, 2 allée des Séquoias
F-69760 Limonest
Phone: (+33) (0) 4 74 71 93 30
www.rollon.fr - infocom@rollon.fr

ROLLON Ltd - UK (Rep. Office)

The Works 6 West Street Olney
Buckinghamshire, United Kingdom, MK46 5 HR
Phone: +44 (0) 1234964024
www.rollon.uk.com - ukandireland@rollon.com

AMERICA

ROLLON Corporation - USA

101 Bilby Road. Suite B
Hackettstown, NJ 07840
Phone: (+1) 973 300 5492
www.rollon.com - info@rolloncorp.com

ROLLON - SOUTH AMERICA

101 Bilby Road. Suite B
Hackettstown, NJ 07840
Phone: (+1) 973 300 5492
www.rollon.com - info@rolloncorp.com

ASIA

ROLLON Ltd - CHINA

No. 1155 Pang Jin Road,
China, Suzhou, 215200
Phone: +86 0512 6392 1625
www.rollon.cn.com - info@rollon.cn.com

ROLLON India Pvt. Ltd. - INDIA

39-42, Electronic City, Phase-I,
Hosur Road, Bangalore-560100
www.rollonindia.in - info@rollonindia.in

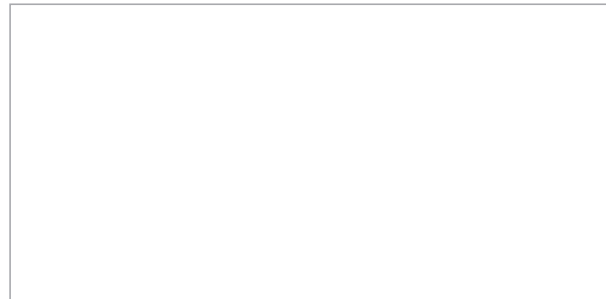
ROLLON - JAPAN

〒252-0131
神奈川県相模原市緑区西橋本1-21-4
橋本屋ビル
電話番号：+81 (0) 42 703 4101
www.rollon.jp - info@rollon.jp

Consult the other ranges of products



Distributor



All addresses of our global sales partners can also be found at www.rollon.com

The content of this document and its use are subject to the general terms of sale of ROLLON available on the web site www.rollon.com
Changes and errors expected. The text and images may be used only with our permission.