

Cost effective check valves from Flotronics Automation help control pneumatic actuator positioning and drifting issues. They also prevent actuators from exhausting in the event of a tube burst.

Male/Female Thread						Male/Female Thread With Manual Override						
Image	Thread		Dimensions (In)			Image	Thread		Dimensions (In)			
	Thread	Part No.	10/32" Pilot Port	C	F		Thread	Part No.	10/32" Pilot Port	C	F	
	1/8" NPT	POC18		1.61	1.05		1/8" NPT	POC18-M		2.30	1.05	
	1/4" NPT	POC14		1.89	1.29		1/4" NPT	POC14-M		2.59	1.29	
	3/8" NPT	POC38		2.17	1.61		3/8" NPT	POC38-M		2.85	1.61	
	1/2" NPT	POC12		2.58	1.82		1/2" NPT	X		X	X	
Thread With Push-In Fitting												
Image	Thread Size	Tube Size (OD)				Dimensions (In) (+/- .125")						
		5/32" (4mm)	1/4"	5/16" (8mm)	3/8"	1/2"	C					
	1/8" NPT	POC18-532	POC18-14	X	X	X		1.61				
	F Dimension (In)	1.77	1.83									
	1/4" NPT	POC14-532	POC14-14	POC14-38	X	X		1.89				
	F Dimension (In)	2.04	2.11	2.37								
	3/8" NPT	X	POC38-14	POC38-516	POC38-38	X		2.17				
	F Dimension (In)		2.43	2.47	2.61							
1/2" NPT	X	X	POC12-516	POC12-38	POC12-12	2.58						
F Dimension (In)			2.88	2.88	2.99							
Thread With Push-In Fitting & Manual Override												
Image	Thread Size	Tube Size (OD)				Dimensions (In) (+/- .125")						
		5/32" (4mm)	1/4"	5/16" (8mm)	3/8"	1/2"	C					
	1/8" NPT	POC18-532-M	POC18-14-M	X	X	X		2.30				
	F Dimension (In)	2.04	2.11									
	1/4" NPT	POC14-532-M	POC14-14-M	POC14-38-M	X	X		2.59				
	F Dimension (In)	2.04	2.11	2.37								
	3/8" NPT	X	POC38-14-M	POC38-516-M	POC38-38-M	X		2.85				
	F Dimension (In)		2.43	2.47	2.61							
1/2" NPT	X	X	X	X	X	3.26						
F Dimension (In)												
Thread With Flow Control												
Image	Thread Size	Tube Size (OD)				Dimensions (In) (+/- .125")						
		5/32" (4mm)	1/4"	5/16" (8mm)	3/8"	1/2"	C					
	1/8" NPT	POCFC18-532	POCFC18-14	X	X	X		1.61				
	F Dimension (In)	2.28	2.28									
	1/4" NPT	POCFC14-532	POCFC14-14	POCFC14-38	X	X		1.89				
	F Dimension (In)	2.22	2.84	2.84								
	3/8" NPT	X	POCFC38-14	POCFC38-516	POCFC38-38	X		2.17				
	F Dimension (In)		3.27	3.27	3.28							
1/2" NPT	X	X	POCFC12-516	POCFC12-38	POCFC12-12	2.58						
F Dimension (In)			3.7	3.7	3.7							
Thread With Push-In Fitting												
Image	Thread Size	Tube Size (OD)T				Dimensions (In) (+/- .125")						
		5/32" (4mm)	1/4"	5/16" (8mm)	3/8"	1/2"	C					
	1/8" NPT	POCFC18-532-M	POCFC18-14-M	X	X	X		2.30				
	F Dimension (In)	2.28	2.28									
	1/4" NPT	POCFC14-532-M	POCFC14-14-M	POCFC14-38-M	X	X		2.59				
	F Dimension (In)	2.22	2.84	2.84								
	3/8" NPT	X	POCFC38-14-M	POCFC38-516-M	POCFC38-38-M	X		2.85				
	F Dimension (In)		3.27	3.27	3.28							
1/2" NPT	X	X	X	X	X	3.26						
F Dimension (In)												

\*"G" threads available upon request. 1/2" Body size is not available with manual override\*



### Maximum Tightening Torque lb/in (Nm)

1/8" NPT	5.1 (7)
1/4" NPT	11.0 (15)
3/8" NPT	14.7 (20)
1/2" NPT	14.7 (20)

\*Tightening torques are valid without using thread sealant.\*

Flow Controls are meter out with knob adjust.

### Pilot Port Fitting (5/32" Tube x 10/32 Thread)

PC5/32-U10U



### Pilot Port Tubing (5/32" OD - 50 Ft)

FLEX-532-NB-50X



Flotronics Automation is also an official distributor for Aladco In Line High Flow Pilot Operated Check Valves!



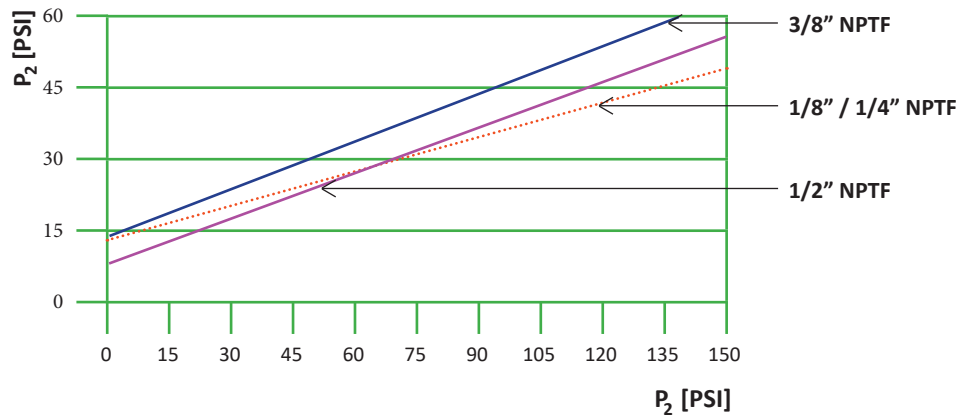
Contact us for more information.

### Specifications

Materials	Check Valve: Brass, Zinc Plated Brass, Galvanized Zinc, Steel, NBR Fitting or Flow Control: Resin, Nickel Plated Brass, Steel, NBR
For Fluids	Lubricated & Non-Lubricated Compressed Air
Operating Pressure	Check Valve Only or Check Valve with Fitting or Flow Control: 14.5 to 145 PSI
Temperature Range	Check Valve Only: 14 Deg F to 158 Deg F Check Valve with Fitting or Flow Control: 32 Deg F to 140 Deg F

### Signal Pressure Characteristics

Minimum signal pressure P to open the valve



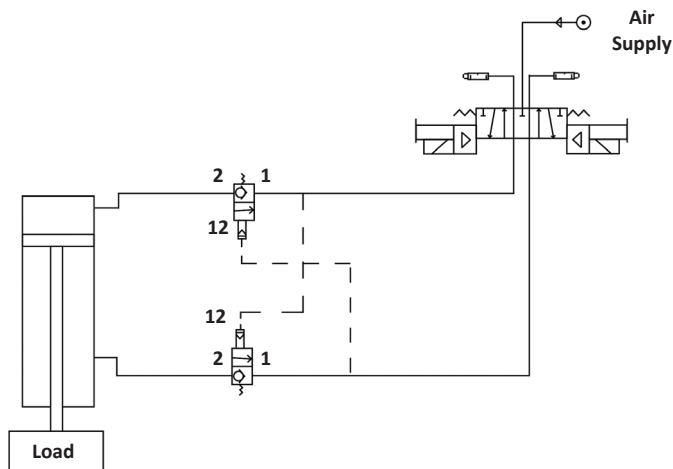
### Flow - From 2 to 1 with Throttle Closed (SCFM) - P<sub>1</sub>

1/8" NPT	1/4" NPT	3/8" NPT	1/2" NPT
10.2	23.9	40.8	67.5

### Flow - From 1 to 2 with Throttle Closed (SCFM) - P<sub>2</sub>

1/8" NPT	1/4" NPT	3/8" NPT	1/2" NPT
4.5	21.8	41.25	66.67

### Circuit Schematic



\*All information subject to change without notice\*

Ask us about our

# Flotronics NOW

SAME DAY SHIPPING/ PICK-UP ITEMS\*

[sales@flotronicsautomation.com](mailto:sales@flotronicsautomation.com)

Flotronics Automation—East  
10435 Ortonville Rd. | Clarkston, MI 48348  
Phone: 248-625-8990 | Fax: 248-625-8818

[www.flotronicsautomation.com](http://www.flotronicsautomation.com)

Flotronics Automation—West  
3542 Roger B. Chaffee SE | Wyoming, MI 49548  
Phone: 616-682-7013 | Fax: 248-625-8818