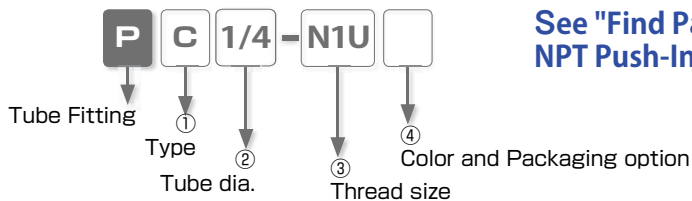


## Model Designation (Example)



See "Find Part #" for Inch NPT Push-In fitting models

### ① Type

Code	Type	Code	Type	Code	Type	Code	Type
C	Straight	OC	Inner Hex. Straight	L	Elbow	LL	Long Elbow
LH	45° Elbow	H	Single Banjo	OL	Hex. Holed Banjo	B	Branch Tee
D	Run Tee	X	Branch Y	VX	Tripod Elbow	AX	Branch Elbow
A	Twin Banjo	RX	Double Branch Y	HW	Double Banjo	HT	Triple Banjo
AW	Double Twin Banjo	AT	Triple Twin Banjo	CF	Female Straight	MF	Bulkhead Female Straight
LF	Female Elbow	KD	Triple Run Tee	KVD	Twin Triple Run Tee	AF	Link-up Twin Banjo
HF	Link-up Banjo	U	Union Straight	E	Union Tee	V	Union Elbow
Y	Union Y	M	Bulkhead Union	MP	Bulkhead Union P	ML	Bulkhead Union Elbow
VU	Tripod Union	AU	Branch Union Elbow	ZA	Union Cross	G	Unequal Union Straight
EG	Unequal Union Tee	RG	Unequal Double Y	W	Unequal Union Y	KG	Unequal Triple Tee
KVG	Unequal Twin Triple Tee	ZB	Unequal Cross	ZC	Reducing Cross	GJ	Unequal Plug-in Straight
LJ	Plug-in Elbow	LGJ	Unequal Plug-in Elbow	LLGJ	Unequal Plug-in Long Elbow	LHJ	45° Plug-in Elbow
LLJ	Long Plug-in Elbow	YJ	Plug-in Y	WJ	Unequal Plug-in Y	KJ	Plug-in Triple Tee
RJ	Plug-in Double Y	F	Extension Screw Adaptor	FF	Unequal Screw Union	IJ	Union Stem
IG	Unequal Union Stem	TJ	PT Jack	PF	Cap	P	Plug

※  parts are redesigned models.

### ② Tube dia. (※ In case that ② indicates thread, select thread size from table ③)

Tube dia.	inch size							mm size					
	Code	5/32	3/16	1/4	5/16	3/8	1/2	5/8	4	6	8	10	12
Size (mm)	ø3.97	ø4.76	ø6.35	ø7.94	ø9.53	ø12.7	ø15.88	ø4	ø6	ø8	ø10	ø12	ø16
O.D. (inch)	5/32	3/16	1/4	5/16	3/8	1/2	5/8						

※ Visit MINI fittings for 1/8" O.D. or 3mm, 2mm, 1.8mm O.D. and 1/4", 5/32", 4mm, 6mm O.D. with smaller body fitting.

### ③ Thread size (※ In case that ③ indicates tube dia., select tube dia. from table ②)

Thread	UNF thread	National pipe taper thread				
	Code	U10U	N0U	N1U	N2U	N3U
Size	10-32UNF	NPT1/16	NPT1/8	NPT1/4	NPT3/8	NPT1/2

※ The unit of wrench size is inch (the code suffix is "U").

Thread	Metric thread (mm)		British pipe taper thread			
	Code	M5	M6	01	02	03
Size	M5 × 0.8	M6 × 1	R1/8	R1/4	R3/8	R1/2

※ R thread is same as BSPT

### ④ Color and Packaging option

Code	Color and Package classification	Color Combination		Remark
		Release ring (※)	Fitting body	
No code	Std.	Black, White	Black	
-C	Clean-room package	Light-blue, White	Light-gray, Black	Optional selection
W	Light-gray	Light-gray	Light-gray	Optional selection
W-C	Light-gray + Clean-room pkg.	Light-gray	Light-gray	Optional selection
-UC	Clean-wash and Clean-room pkg.	Light-blue	Light-gray	Optional selection

※ . Release-ring color is white for inch-size products.

※ . Imperial sizes - Clean-room Package comes with black body. Ask us for the options W, W-C, -UC

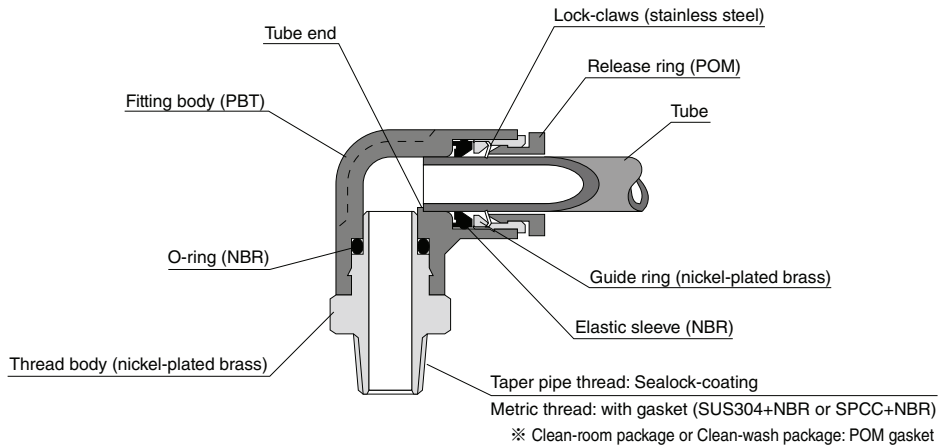
## Specifications

Fluid medium	Air / Water (※)
Max. operating pressure	150psi (1.0MPa)
Max. vacuum	-29.5in. Hg (-100kPa)
Operating temp. range	32 ~ 140°F (0 ~ 60°C) (no freezing)

### ⚠ Warning

- ※ . Make sure to follow the instructions below when the fluid medium is water.
1. Surge pressure must be controlled lower than max. operating pressure.
  2. Tap water can be used. Consult with PISCO for using other kind of water.
  3. Be sure to place Insert Ring into the tube edge when using water as a fluid medium.

## Construction (Elbow: PL)



## ⚠ Detailed Safety Instructions

Before using PISCO products, be sure to read "Safety Instructions" and "Common Safety Instructions for Products Listed in This Catalog" and "Common Safety Instructions for Fittings"

### Warning

1. When the fluid medium is water, do not use Tube Fitting Standard Series unless the operating environment meets all the described specifications in the catalog. Otherwise, it may cause damage to the products, the escape of tubes and a fluid leakage.

### Caution

1. To adjust the direction of the elbow fitting after fixing PML (Bulkhead Union Elbow) type, turn it in the clock-wise (right) direction.
2. Attach a rubber washer to the aluminum nut side when installing PML (Bulkhead Union Elbow) type. The bulkhead parts may be loosened or the rubber washer may deform if attaching it to the hexagonal side.

### Caution (Clean-room package, clean-wash package)

1. As for Push-In Fitting, the functional part where tube is inserted may slightly slide due to an internal pressure change and this may generate dusts. Avoid using the fitting in the clean room of ISO class from 1 to 5. Under the vibrating condition, check the amount of dust generated from the fitting and tubes, by using actual facilities.

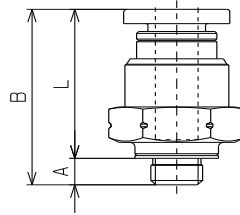
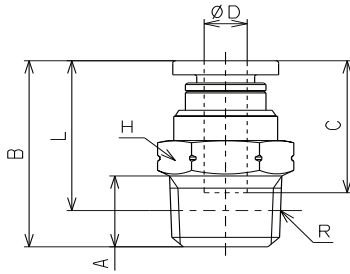
### Caution (Clean-wash package)

1. Tube insertion into the push-in fitting with clean-wash spec. is tighter than that of standard spec. due to its oil-free specification. Make sure to insert tube up to tube end.



# Straight

RoHS compliant



Unified thread

## ❖ NPT and UNF thread

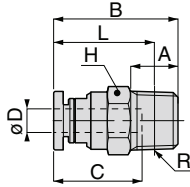
unit: inch

Model	Tube O.D. φ D	R	A	B	L	C	Hex.	Orifice (φ mm)	Weight (g)
PC5/32-U10U	5/32	10-32UNF	0.11	0.78	0.67	0.59	7/16	2.4	6.2
PC5/32-N0U	5/32	1/16 NPT	0.31	0.83	0.67	0.59	7/16	3	6.5
PC5/32-N1U	5/32	1/8 NPT	0.31	0.83	0.67	0.59	7/16	3	8.3
PC5/32-N2U	5/32	1/4 NPT	0.43	0.89	0.66	0.59	9/16	3	17
PC3/16-U10U	3/16	10-32UNF	0.11	0.88	0.77	0.69	1/2	2.4	9.2
PC3/16-N0U	3/16	1/16 NPT	0.31	1.05	0.89	0.69	1/2	3	12
PC3/16-N1U	3/16	1/8 NPT	0.31	0.89	0.73	0.69	1/2	4	10
PC3/16-N2U	3/16	1/4 NPT	0.43	0.95	0.72	0.69	9/16	4	16
PC3/16-N3U	3/16	3/8 NPT	0.47	0.98	0.74	0.69	11/16	4	30
PC1/4-U10U	1/4	10-32UNF	0.11	0.86	0.75	0.67	1/2	2.4	8.6
PC1/4-N0U	1/4	1/16 NPT	0.31	1.03	0.87	0.67	1/2	3	11
PC1/4-N1U	1/4	1/8 NPT	0.31	0.88	0.71	0.67	1/2	5.3	8.6
PC1/4-N2U	1/4	1/4 NPT	0.43	0.93	0.70	0.67	9/16	5.3	15
PC1/4-N3U	1/4	3/8 NPT	0.47	0.96	0.72	0.67	11/16	5.3	29
PC5/16-N1U	5/16	1/8 NPT	0.31	1.10	0.94	0.72	9/16	6	14
PC5/16-N2U	5/16	1/4 NPT	0.43	1.05	0.82	0.72	9/16	7	15
PC5/16-N3U	5/16	3/8 NPT	0.47	1.00	0.76	0.72	11/16	7	26
PC3/8-N1U	3/8	1/8 NPT	0.31	1.19	1.03	0.81	11/16	6	23
PC3/8-N2U	3/8	1/4 NPT	0.43	1.17	0.94	0.81	11/16	8.5	20
PC3/8-N3U	3/8	3/8 NPT	0.47	1.15	0.91	0.81	11/16	8.5	26
PC3/8-N4U	3/8	1/2 NPT	0.59	1.20	0.88	0.81	7/8	8.5	49
PC1/2-N2U	1/2	1/4 NPT	0.43	1.41	1.18	0.91	7/8	8.5	38
PC1/2-N3U	1/2	3/8 NPT	0.47	1.25	1.01	0.91	7/8	11	31
PC1/2-N4U	1/2	1/2 NPT	0.59	1.33	1.01	0.91	7/8	11	45
PC5/8-N3U	5/8	3/8 NPT	0.47	1.55	1.31	0.98	1	11	61
PC5/8-N4U	5/8	1/2 NPT	0.59	1.63	1.31	0.98	1	13	69
PC4-U10U	4mm	10-32UNF	0.11	0.78	0.67	0.59	7/16	2.4	6.2
PC4-N0U	4mm	1/16 NPT	0.31	0.83	0.67	0.59	7/16	2.4	6.5
PC4-N1U	4mm	1/8 NPT	0.31	0.83	0.67	0.59	7/16	3	8.3
PC4-N2U	4mm	1/4 NPT	0.43	0.89	0.66	0.59	9/16	3	17
PC6-U10U	6mm	10-32UNF	0.11	0.86	0.75	0.67	1/2	2.4	8.7
PC6-N0U	6mm	1/16 NPT	0.31	1.03	0.87	0.67	1/2	2.4	11
PC6-N1U	6mm	1/8 NPT	0.31	0.88	0.71	0.67	1/2	5	8.8
PC6-N2U	6mm	1/4 NPT	0.43	0.93	0.70	0.67	9/16	5	15
PC6-N3U	6mm	3/8 NPT	0.47	0.96	0.72	0.67	11/16	5.3	30
PC8-N1U	8mm	1/8 NPT	0.31	1.10	0.94	0.72	9/16	6	14
PC8-N2U	8mm	1/4 NPT	0.43	1.05	0.82	0.72	9/16	7	15
PC8-N3U	8mm	3/8 NPT	0.47	1.00	0.76	0.72	11/16	7	26
PC10-N1U	10mm	1/8 NPT	0.31	1.19	1.03	0.81	11/16	6	23
PC10-N2U	10mm	1/4 NPT	0.43	1.17	0.94	0.81	11/16	8.5	20
PC10-N3U	10mm	3/8 NPT	0.47	1.15	0.91	0.81	11/16	9	25
PC10-N4U	10mm	1/2 NPT	0.59	1.20	0.88	0.81	7/8	9	48
PC12-N2U	12mm	1/4 NPT	0.43	1.41	1.19	0.92	7/8	8.5	39
PC12-N3U	12mm	3/8 NPT	0.47	1.26	1.02	0.92	7/8	11	32
PC12-N4U	12mm	1/2 NPT	0.59	1.33	1.02	0.92	7/8	11	46
PC16-N3U	16mm	3/8 NPT	0.47	1.55	1.31	0.98	1	11	61
PC16-N4U	16mm	1/2 NPT	0.59	1.63	1.31	0.98	1	13	69

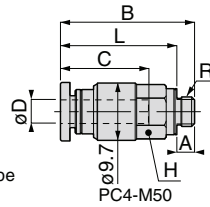
1/8" O.D. and 5/32", 1/4" with smaller body fitting - see Fitting Mini

# PC Straight

RoHS compliant



Metric thread type



Unit : mm

## ❖ Metric thread

Model code	Tube O.D. øD	R	A	B	L	Tube end C	Hex. H	Orifice bore (ømm)	Weight (g)	CAD file name					
PC4-M5④	4	M5 × 0.8	2.8 [3]	19.8	17 [16.8]	14.9	10	2.4	5.6	PC4-M5_[C]					
PC4-M50④				22.7	19.9 [19.7]		8		6.1	PC4-M50_[C]					
PC4-M6④		M6 × 1	3.8	20.8	17		10	6	PC4-M6_[C]						
PC4-01④			R1/8	8	21		17	10	7.4	PC4-01_					
PC4-02④			R1/4	11	22.5		16.5	14	16	PC4-02_					
PC6-M5④	6	M5 × 0.8	2.8 [3]	21.9	19.1 [18.9]	17	12	2.4	8.1	PC6-M5_[C]					
PC6-M6④				3.8	22.9				19.1	3	8.5	PC6-M6_[C]			
PC6-01④		R1/8	8	22.3	18.3		14	5	8.2	PC6-01_					
PC6-02④		R1/4	11	23.7	17.6				15	PC6-02_					
PC6-03④		R3/8	12	24.5	18.1				17	28	PC6-03_				
PC8-01④	8	R1/8	8	27.9	23.9	18.2	14	6	14	PC8-01_					
PC8-02④		R1/4	11	26.6	20.6				17	7	25	PC8-02_			
PC8-03④		R3/8	12	25.5	19.2						25	PC8-03_			
PC10-01④	10	R1/8	8	30.3	26.3	20.7	17	6	21	PC10-01_					
PC10-02④		R1/4	11	29.8	23.8				21	8.5	19	PC10-02_			
PC10-03④		R3/8	12	29.3	23						9	24	PC10-03_		
PC10-04④		R1/2	15	30.4	22.2				46	PC10-04_					
PC12-02④	12	R1/4	11	35.9	29.9	23.3	21	8.5	37	PC12-02_					
PC12-03④		R3/8	12	31.9	25.6				11	30	PC12-03_				
PC12-04④		R1/2	15	33.9	25.7					44	PC12-04_				
PC16-03④	16	R3/8	12	39.3	33	24.8	24	11	54	PC16-03_					
PC16-04④		R1/2	15	41.3	33.1				13	63	PC16-04_				
PC5/32-M5④	5/32"	M5 × 0.8	2.8 [3]	19.8	17 [16.8]	14.9	10	2.4	5.6	PC5_32-M5_[C]					
PC5/32-01④			R1/8	8	21				17	14	3	7.4	PC5_32-01_		
PC5/32-02④			R1/4	11	22.5				16.5			16	PC5_32-02_		
PC3/16-M5④	3/16"	M5 × 0.8	2.8 [3]	22.3	19.5 [19.3]	17.4	12	2.4	8.6	PC3_16-M5_[C]					
PC3/16-01④			R1/8	8	22.7				18.7	14	4	9	PC3_16-01_		
PC3/16-02④			R1/4	11	24.1				18			16	PC3_16-02_		
PC1/4-M5④	1/4"	M5 × 0.8	2.8 [3]	21.9	19.1 [18.9]	17	12	2.4	8	PC1_4-M5_[C]					
PC1/4-01④			R1/8	8	22.3					18.3	14	5.3	15	PC1_4-01_	
PC1/4-02④			R1/4	11	23.7					17.6			17	28	PC1_4-02_
PC1/4-03④			R3/8	12	24.5					18.1					PC1_4-03_
PC5/16-01④	5/16"	R1/8	8	27.9	23.9	18.2	14	6	14	PC5_16-01_					
PC5/16-02④		R1/4	11	26.6	20.6				17	7	25	PC5_16-02_			
PC5/16-03④		R3/8	12	25.5	19.2						25	PC5_16-03_			
PC3/8-01④	3/8"	R1/8	8	30.3	26.3	20.7	17	6	22	PC3_8-01_					
PC3/8-02④		R1/4	11	29.8	23.8				21	8.5	19	PC3_8-02_			
PC3/8-03④		R3/8	12	29.3	23						47	25	PC3_8-03_		
PC3/8-04④		R1/2	15	30.4	22.2				47	PC3_8-04_					
PC1/2-02④	1/2"	R1/4	11	35.7	29.7	23.1	21	8.5	36	PC1_2-02_					
PC1/2-03④		R3/8	12	31.7	25.4				11	29	PC1_2-03_				
PC1/2-04④		R1/2	15	33.7	25.5					43	PC1_2-04_				
PC5/8-03④	5/8"	R3/8	12	39.3	33	24.8	24	11	54	PC5_8-03_					
PC5/8-04④		R1/2	15	41.3	33.1				13	63	PC5_8-04_				

※ 1. ④ in Model code / Replaced with "W" for Light-gray color, "-C" for Clean-room package, "W-C" for Light-gray color and Clean-room package, "-UC" for Clean-wash and Clean-room package

※ 2. "L" is a reference value for height dimension after tightening taper thread.

※ 3. Dimensions in [ ] are for clean-room and clean-wash package products.

※ 4. Orifice bore is the smallest passage converted in terms of the diameter.